

ZQ-ANT-2

868 MHz antenna with bracket

Antenna 868 MHz omnidirezionale, guadagno 2,1 dBi. Antenna con elementi radianti isolati rispetto all'esterno del radome dell'antenna ed a tenuta stagna (IP67), completa di cavo low-loss Ø5mm lunghezza 10m con conettore SMA-M e staffa per l'installazione a palo/muro.

Omni-directional 868 MHz antenna, 2,1 dBi gain. Antenna with radiant elements isolated from the outside of the antenna radome and watertight (IP67), complete with lowloss cable Ø5mm length 10m with SMA-M connector and bracket for pole/wall installation.

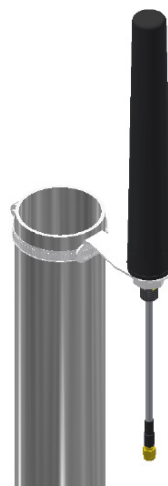


Modelli | Models

Model	Code	Description
ZQ-ANT-2	ZQ06-02R0	868 MHz antenna, 2,1 dBi, IP67, low-loss 10m cable SMA-M and bracket.

Specifiche tecniche | Technical specifications

Frequency band (VSWR <2:1)	830-960 1710-2690 MHz
Impedance	50 Ω
V.S.W.R. 868 MHz	< 2 : 1
Max power	10 W
Polarization	Linear
Radiation	Omnidirectional
Gain	2,1 dBi
Cable	Low-loss Ø5mm, 10m
Operating temperature	-35° / +80°C
Radiant element	Copper
Screws	Stainless steel
Connector	SMA male
IP grade	IP67
Dimensions (approx):	Ø30x200 mm
Weight (approx):	410 g



Pole installation

Use stainless steel clamp 9 mm high